

### Fuel Pump Module Kit 25 755 73-S

Fuel Pump Module w/Baffle Kit 25 755 74-S (EKT740, EKT750, EZT715-EZT750)

Fuel Pump Module w/Baffle Kit 19 755 24-S (ECV850-ECV880)

This kit provides a service fuel pump module that may also require installation of an updated baffle.

1. Compare the old fuel pump module to Figures 1 and 2.

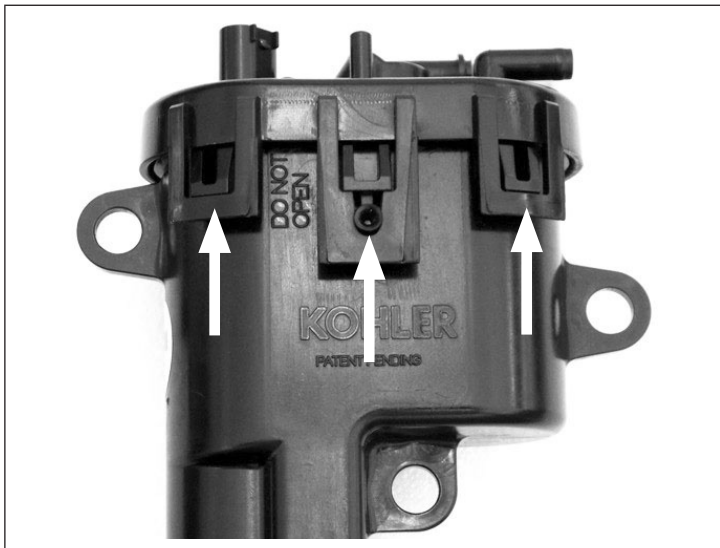


Figure 1. Fuel Pump Module with Plastic Retaining Clips.



Figure 2. Fuel Pump Module with Metal Retaining Clips.

2. If a fuel pump module with metal clips (see Figure 2) is being installed where a fuel pump module with plastic clips (see Figure 1) was removed, an interference inspection **MUST BE** performed.
3. Follow all service manual warnings and procedures to remove the old fuel pump module.
4. Perform a fit up of the new fuel pump module on the existing mounting baffle. Inspect for any interference between the new fuel pump module and the mounting baffle. See Figure 3.

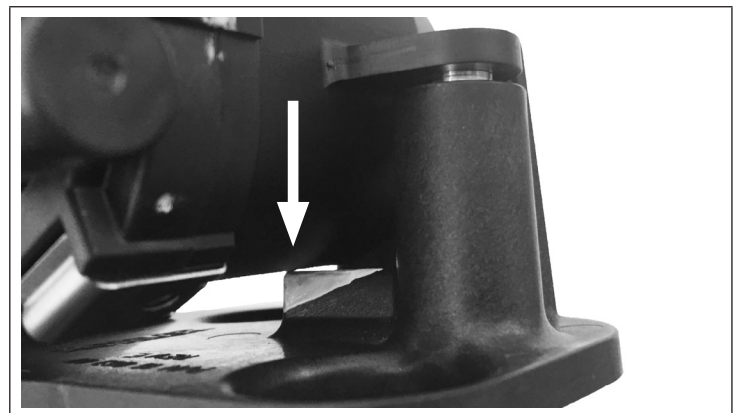


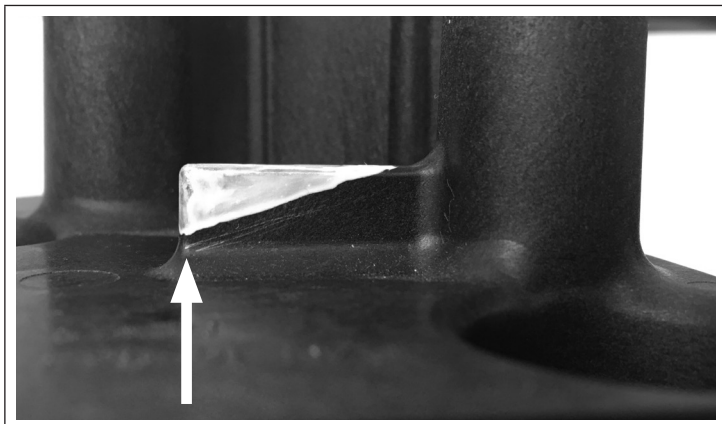
Figure 3. Interference Between Existing Baffle and New Module with Metal Clips.

5. If interference is seen between the existing mounting baffle and the new FPM, a new mounting baffle must be installed.

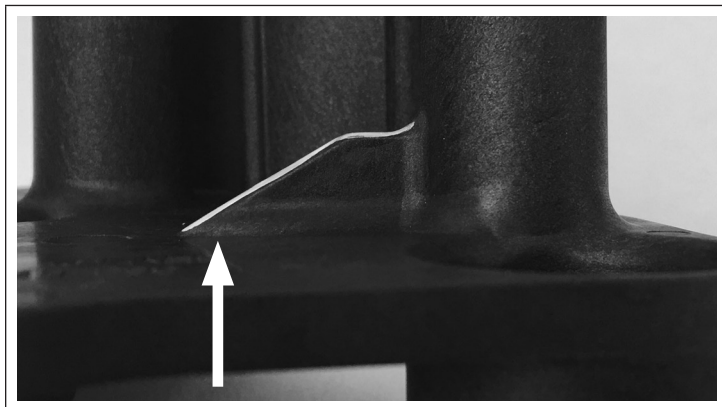
For **Kit 25 755 73-S**, refer to the engine parts list on [www.kohlerplus.com](http://www.kohlerplus.com) site to identify the baffle to order.

For **Kit 19 755 74-S** or **25 755 74-S**, replace the existing baffle with the one from the kit.

The baffles have been revised to accommodate the fuel pump module with the metal clips by removing a small amount of material from the interfering support rib. See Figures 4 and 5.



**Figure 4. Old Baffle with Taller Support Rib.**



**Figure 5. Revised Baffle with Reduced Height Support Rib.**

6. For **Kit 25 755 73-S**, check clamps of oil cooler hoses for clearance with new fuel pump. Rotate legs of clamps as necessary.

Follow all service manual warnings and procedures to install the kit parts.